



UltimateHomes&Finance

Plot 39, Portchester Close, Riverside View, Ingleby Barwick, TS17 5LQ



£724,950

Luxury Homes for sale on Riverside View, Ingleby Barwick - The Ultimate Part Exchange available with this property - [click here to learn more](#). Ultimate Developments, as the name suggests is synonymous with quality, sumptuous living and un-paralleled attention to detail. Our homes are designed to provide the 'ultimate' living experience, rewarding the owner with a level of comfort that simply makes family living easier. Our experience, the skilled craftsmen we employ and our considerable international contacts enable us to source the finest materials, including hand / bespoke made products that offer an attractive alternative to those who seek the very best in all things. Your happiness is our greatest reward. We ensure every consideration is accommodated and every component of the building exceeds your expectations. We build homes for living in the 21st century, embracing technology without compromise on design as only Ultimate Developments can do. Welcome to your Ultimate Home.

Disclaimer

The property details listed on this Web Site are subject to almost constant change and update. For the very latest information on the property seen on this site, please contact us immediately regarding the property you are interested in.

For clarification, we wish to inform prospective purchasers that we have listed the details of these properties as a general guide. We have not carried out a detailed survey nor tested the services, appliances or specific fittings. Room sizes disclosed on this website should not be relied upon for carpets and furnishings.

UltimateHomes&Finance

First Floor Gloster House 22 Falcon Court
Preston Farm Business Park Stockton on Tees TS18 3TX

t: +44 (0) 1642 796661 e: enquiries@ultimatehomesandfinance.co.uk

UltimateHomesandFinance.co.uk



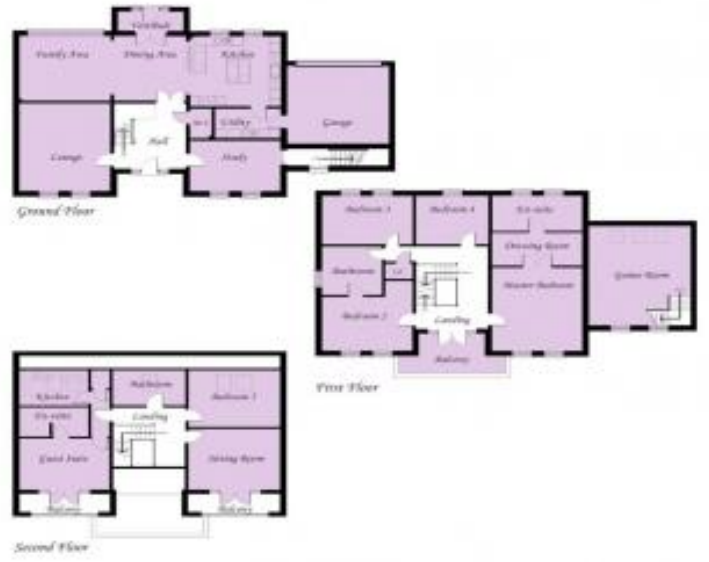
*Plot 39 - Portchester Close,
Ingleby Barwick,*



Example Rooms Comprising of:
 Living Room - 4.7m x 4m - Kitchen / Dining - 7.0m x 4.7m
 Bedroom 1 - 3.8m x 3.5m - Bedroom 2 - 3.8m x 3.5m
 Bedroom 3 - 3.8m x 3.5m - Bedroom 4 - 3.8m x 3.5m
 Bedroom 5 - 3.8m x 3.5m - Ground Floor - 8.7m x 4m



For more information, please contact:
Ultimate Developments
 2nd Floor, 22 Falcon Court, Preston Farm Business Park,
 Stockton on Tees, TS18 3TX
 Tel: 01642 796661
 Email: enquiries@ultimatehomesandfinance.co.uk
 Website: www.ultimatehomesandfinance.co.uk



UltimateHomes&Finance

First Floor, Gloster House, 22 Falcon Court,
 Preston Farm Business Park, Stockton on Tees, TS18 3TX

t: +44 (0) 1642 796661 e: enquiries@ultimatehomesandfinance.co.uk

UltimateHomesandFinance.co.uk

